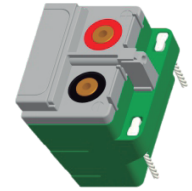


# NLB 12-150 FT

[12V-150Ah] Battery

## Specification

Nominal voltage	12V	
Rated capacity (Ah)	10hr	150Ah @25 °C to 1.80V/cell
	8hr	150Ah @25 °C to 1.75V/cell
Weight	Approx. 48.0 Kg (105.8 lbs)	
Max. Discharge Current	1800 A (5 sec)	
Internal Resistance	Approx. 3.6 mΩ	
Operating Temperature Range	Discharge: -40°C~65°C (-40~149°F)	
	Charge: 0°C~40°C (32~104°F)	
	Storage: -20°C~40°C (-4~104°F)	
Dimension	Length	559 ±1 mm (22.0 inches)
	Width	125 ±1 mm (4.92 inches)
	Container height	277 ±1 mm (10.9 inches)
	Total height (with terminal)	277 ±1 mm (10.9 inches)
Capacity affected by temperature	40°C (104°F)	103%
	25°C (77°F)	100%
Self Discharge	The series batteries can be stored up to 24 months at 25°C (77°F) and then a freshening charge is required. For higher temperatures the time interval will be shorter.	
Terminal	Terminal F11	
Container Material	PC-ABS flame retardant jar and cover to UL94V-0	



### Constant current discharge: (Amperes) at 25°C (77°F)

F.V/Time	10min	15min	20min	30min	45min	1h	2h	3h	4h	5h	8h	10h	20h
1.85V/cell	270.5	227.4	197.0	155.6	119.6	97.6	58.0	41.7	32.6	26.9	17.9	14.7	8.01
1.80V/cell	299.0	248.1	211.4	165.3	126.2	102.6	60.2	43.1	33.7	27.7	18.5	15.0	8.16
1.75V/cell	323.3	264.8	223.6	172.7	130.5	105.8	61.5	43.9	34.3	28.2	18.8	15.3	8.32
1.70V/cell	342.4	279.2	233.9	178.9	134.3	108.3	62.5	44.5	34.6	28.5	19.0	15.5	8.40
1.67V/cell	351.5	286.3	239.0	182.0	135.9	109.4	62.9	44.7	34.9	28.7	19.1	15.6	8.48
1.60V/cell	364.5	297.9	247.1	186.3	138.1	111.0	63.4	44.9	35.0	28.9	19.2	15.6	8.48

### Constant power discharge: (Amperes) at 25°C (77°F)

F.V/Time	10min	15min	20min	30min	45min	1h	2h	3h	4h	5h	8h	10h	20h
1.85V/cell	542.0	459.6	399.8	319.1	247.1	202.7	119.8	85.8	67.1	55.2	36.3	29.6	15.7
1.80V/cell	587.3	490.3	422.6	333.6	256.0	209.0	122.6	87.6	68.4	56.3	36.9	30.2	16.0
1.75V/cell	627.8	517.3	442.2	345.9	263.6	214.2	124.8	89.0	69.4	57.1	37.5	30.7	16.2
1.70V/cell	662.1	539.6	458.3	355.7	269.4	218.3	126.5	90.0	70.2	57.7	37.9	31.0	16.5
1.67V/cell	679.1	550.5	466.1	360.4	272.1	220.1	127.2	90.4	70.5	57.9	38.1	31.2	16.6
1.60V/cell	707.1	567.8	478.1	367.2	275.9	222.5	128.0	90.9	70.9	58.3	38.3	31.3	16.7

# NLB 12-150 FT

(12V-150Ah) Battery

## Applications

- UPS system.
- Backup power.
- Demand charge reduction.
- Time-of-Use bill management.
- Increased PV self consumption.
- Grid-Tied Energy storage system.
- Grid-Zero Energy storage system.

## Key features

- High energy density.
- High-rate performance.
- Low internal resistance.
- Low self-discharging rate.
- Supper high PSoC cycle life.
- Excellent fast charging acceptance: 1 hour to 90% SoC.
- Excellent high rate discharge performancen low temperature.
- Advanced lead acid batteries: Pure lead thin plate carbon technology.



## Layout

